

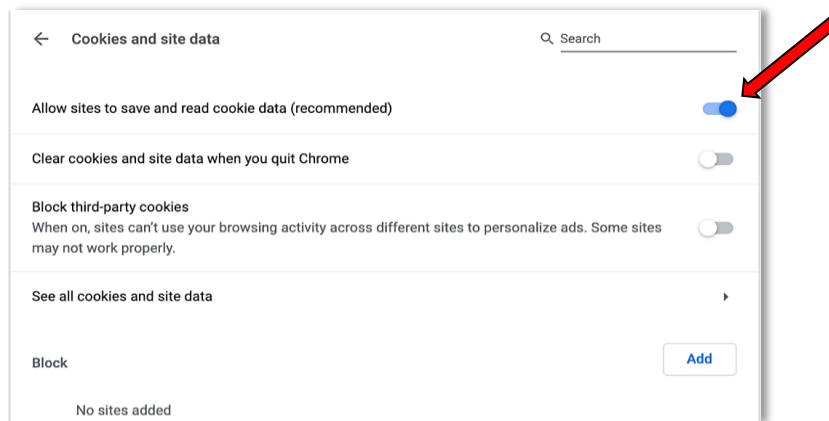
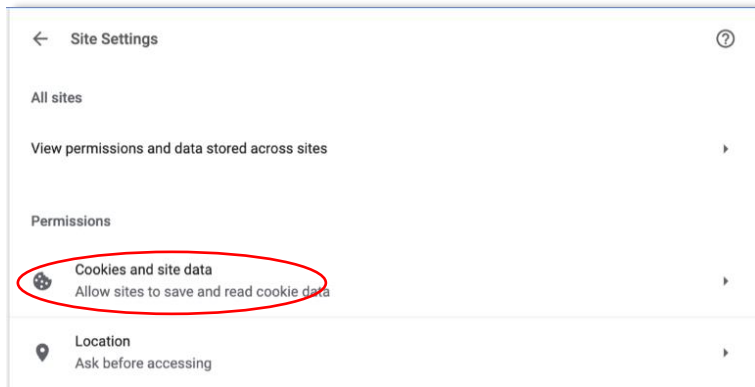
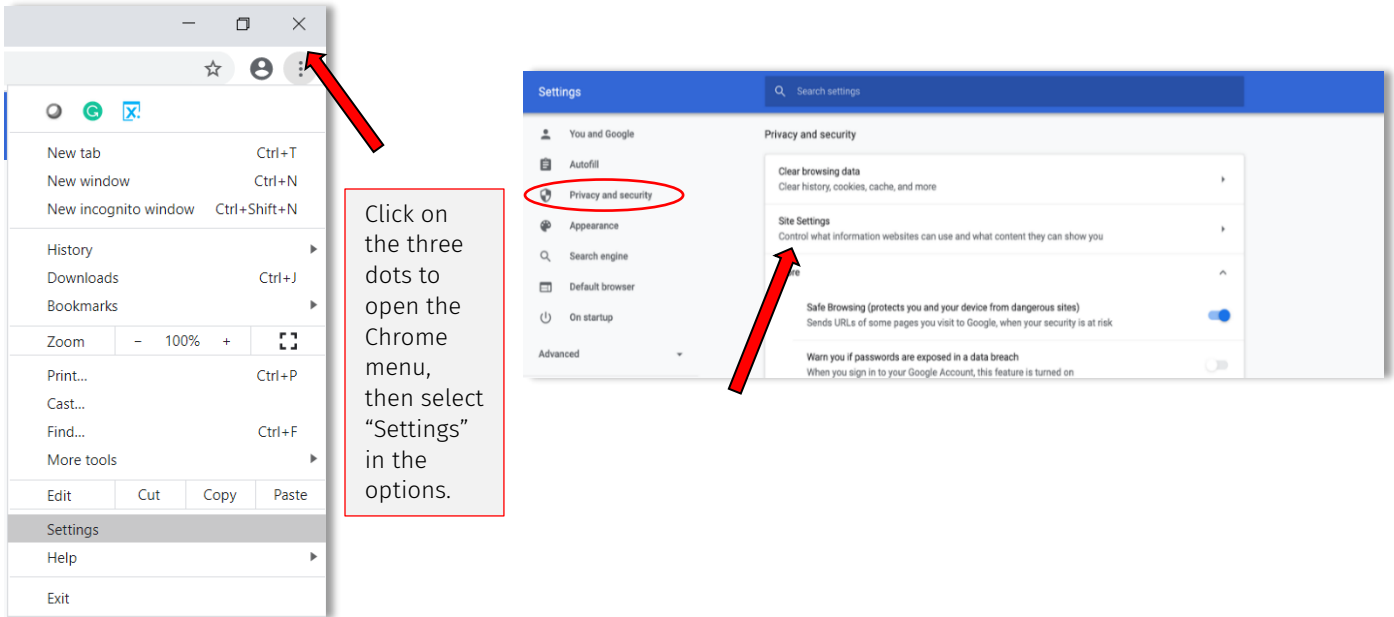


# Google Chrome Settings on PC for ezclasstest

Please follow the technical setting requirements to prepare Google Chrome for electronic assessment delivery. (Typically, assessments work under default settings; however, double check to ensure proper functioning)

## Step 1 – Accept Cookies

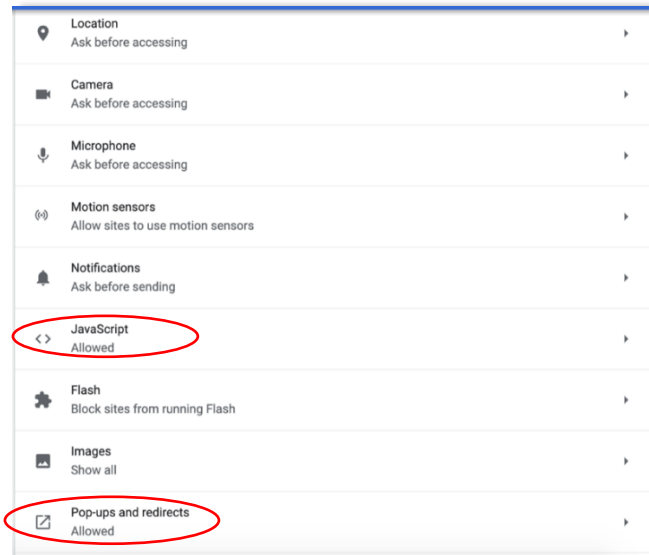
Chrome Menu (3 dots) -> Settings -> Privacy and Security -> Site Settings  
Under Settings -> Cookies and site data -> Allow sites to save and read cookie data



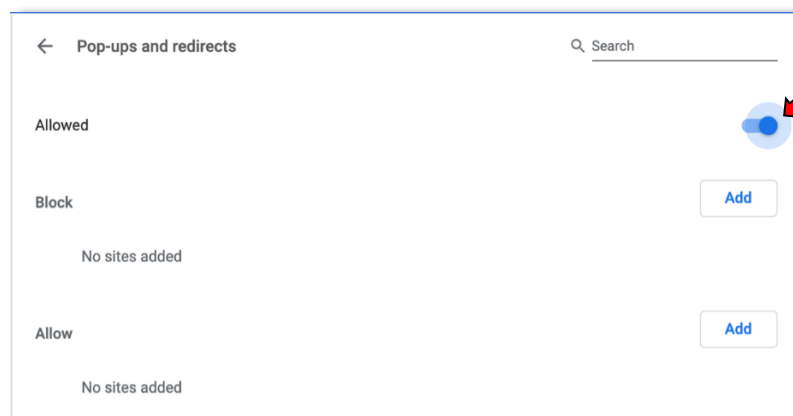
(Google Chrome Settings on PC continued...)

## Step 2 – Enable JavaScript and Pop-ups

Site settings (under permissions) -> Select 'JavaScript' -> Allow

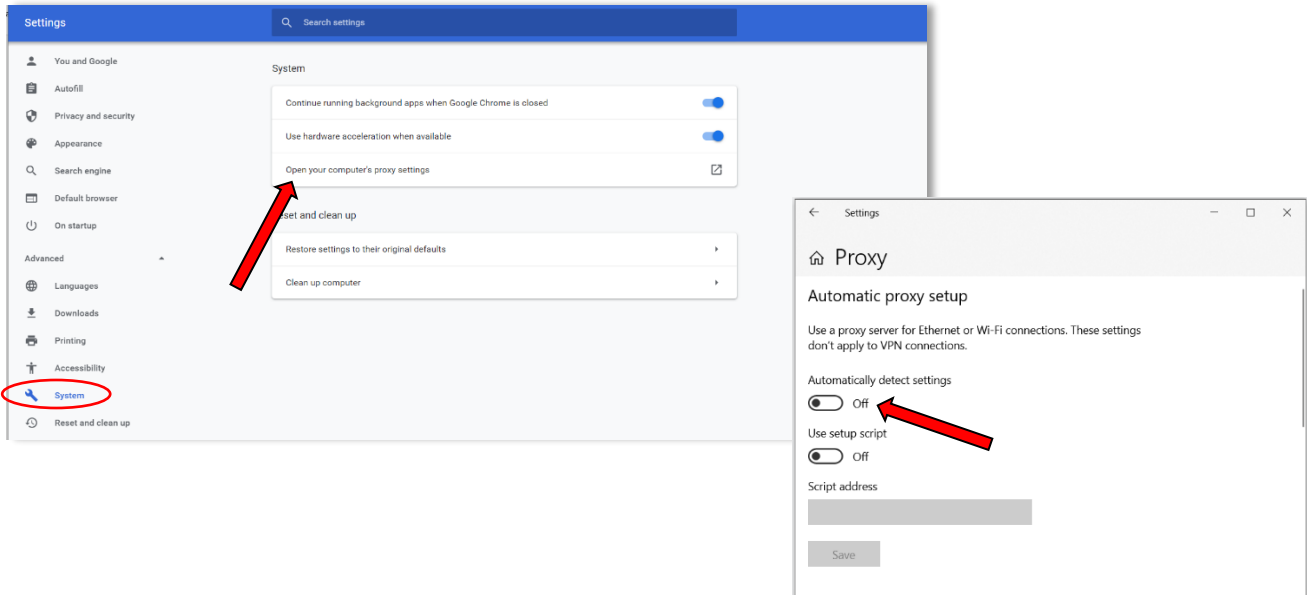


Site settings (under permissions) -> Select 'Pop-ups and redirects' -> Allow



### Step 3 – Bypass Proxies

Settings -> System -> Open your computer's proxy settings -> Make sure Proxy is turned 'Off'



### Note: Resetting Browser Settings

The default setting for Chrome should allow the assessments to function properly. If you run into problems, restore your browser settings to its default and re-deliver the assessments again.

Settings-> System -> Reset settings to their original defaults -> Reset settings

